



North Instructional Building  
Bronx Community College  
Bronx, NY

## Lighting Proposal Memo

Jarret J. Clark L/E

Advisor: Dr. Kevin Houser

9/9/13

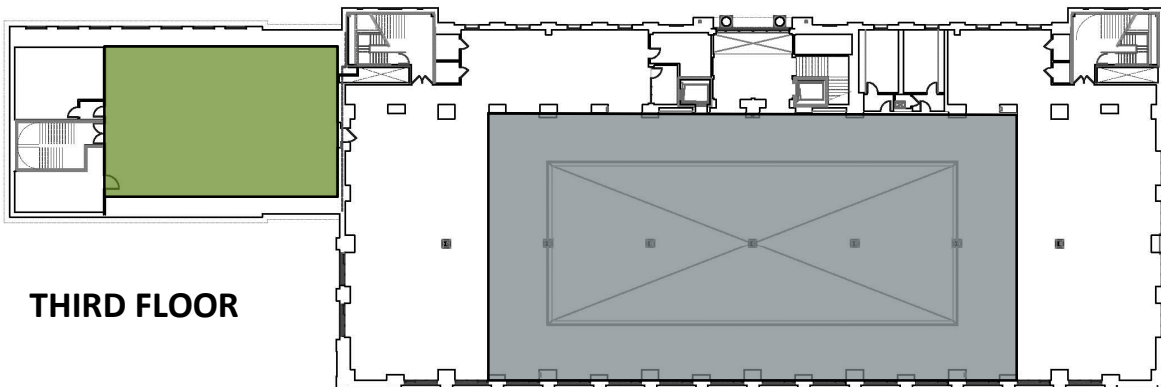
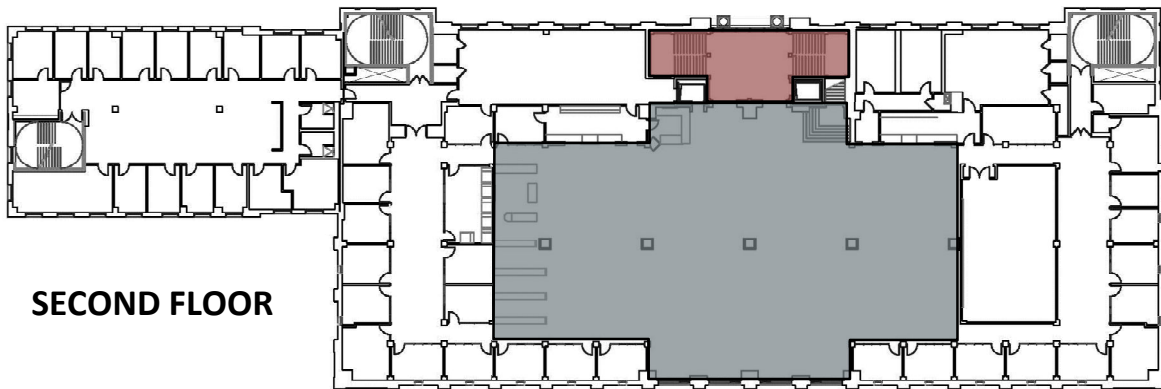
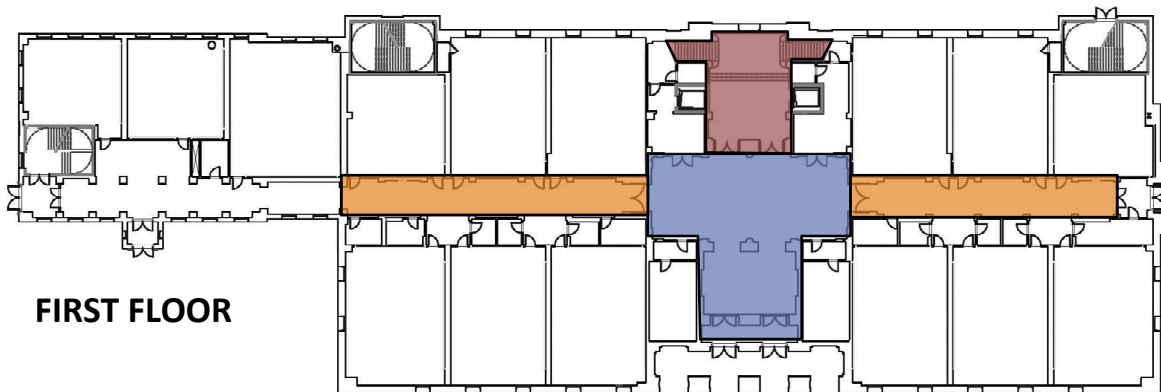
## Table of Contents

Introduction .....	3
Circulation Space I.....	4
Lobby/Information Area .....	4
Circulation Space II – Psychological Impressions.....	9
Corridor.....	9
Monumental Stair.....	10
Stair and Elevator Lobby.....	10
Large Workspace.....	11
Reading Room/Walkway.....	11
Special Purpose Space – Three Schematic Design Concepts .....	12
Multipurpose Classroom and Law Collection .....	12

## Introduction

The lighting design breadth of my senior thesis will examine the following spaces of interest.

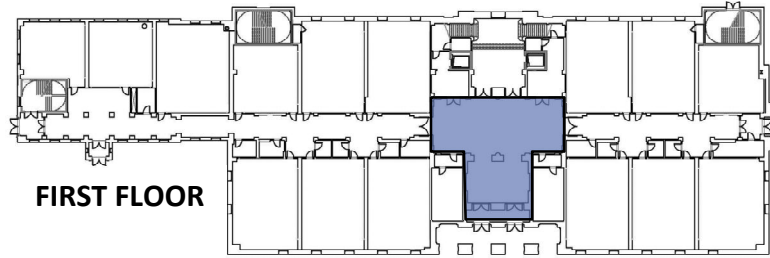
	Circulation Space I	Lobby/Information Area
	Circulation Space II	Corridor
	Monumental Stair	Stair and Display Area
	Large Workspace	Double Height Reading Room
	Special Purpose Space	Multipurpose Classroom/Law Collection



## Circulation Space I

### Lobby/Information Area

Located on the south wall facing the center of campus is N.I.B's primary entrance which consists of a small vestibule followed the lobby's information area and continues into the centralized lobby space.



### Dimensions

#### Information Area

Area – 1598 sq. ft.

Ceiling Height – 12'

Approximate Width – 20'

Approximate Length – 26' 8"

#### Lobby

Area – 573 sq. ft.

Ceiling Height – 12'

Approximate Width – 58' 5"

Approximate Length – 25' 2"

### Materials

#### Ceiling

- GWB
- Decorative GWB Panels

#### Walls

- GWB

#### Floor

- Porcelain Tile ( Info. Area)
- Terracotta Tile (Lobby)

### Tasks

#### Information Area

Walking, Computing, Video Screen

#### Lobby

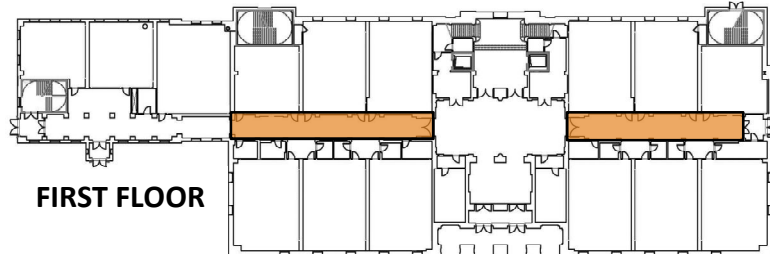
Way-Finding, Socializing



## Circulation Space II – Psychological Impressions

### Corridor

The corridor runs east to west off of the central lobby guiding students to state of the art classrooms on the ground floor.



### Dimensions

Area – 2500 sq. ft.

Ceiling Height – 11' 6"

Approximate Width – 11' 6"

Approximate Length – 170'

### Materials

#### Ceiling

- GWB
- Decorative GWB Panels

#### Walls

- GWB

#### Floor

- Terracotta Tile

### Tasks

Walking





## Monumental Stair

### Stair and Elevator Lobby

Through the two sets of double doors of the lobby is the elevator lobby that displays a scaled model of the building. The monumental stairs follow and display artwork as occupants ascend to the library above.



### Dimensions

Area – 1338 sq. ft.

Ceiling Height – 15'

Approximate Width – 5' 9"

Approximate Length – 16' 3"

### Materials

#### Ceiling

- GWB
- Decorative GWB Panels

#### Walls

- GWB

#### Floor

- Terracotta Tile
- Porcelain Tile

#### Furniture

- Wood Display Case



### Tasks

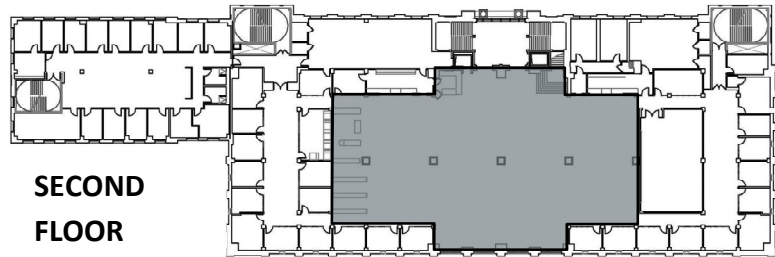
Walking, Viewing Art, Display Case



## Large Workspace

### Reading Room/Walkway

Atop the monumental staircase lies the building's feature space, the library, which showcases an enormous double height reading room.



### Dimensions

#### Reading Room

Area – 9450 sq. ft.

Ceiling Height High Point – 26' 3"

Ceiling Height Low Point – 20' 3"

Approximate Width – 101' 11"

Approximate Length – 136' 8"

#### Walkway

Area – 2565 sq. ft.

Approximate Width – 16' 3"

Approximate Length – 136' 8"

### Materials

#### Ceiling

- Barrel Vaulted GWB
- Acoustical Plaster

#### Walls

- GWB

#### Floor

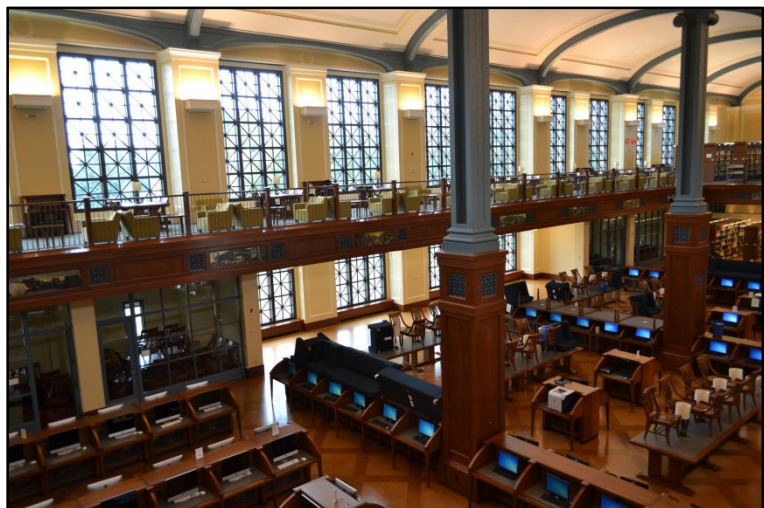
- Cork Floor ( Reading Room)
- Carpet (Walkway)

#### Furniture

- Wood (Reading Room)
- Wood, Fabric (Walkway)

### Tasks

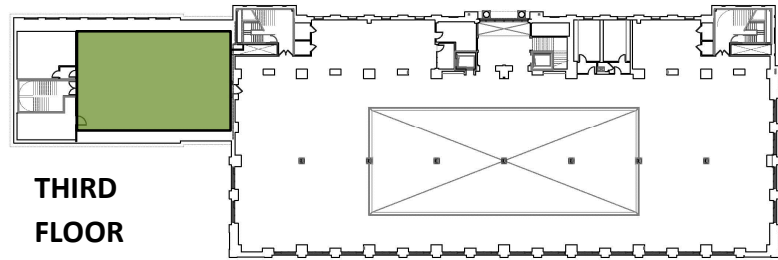
Reading, Writing, Computing



## Special Purpose Space – Three Schematic Design Concepts

### Multipurpose Classroom and Law Collection

The third floor of the southwest wing contains a multipurpose room to hold lectures, courtroom mockups, and store the law stacks.



### Dimensions

Area – 3000 sq. ft.

Ceiling Height – 15'

Approximate Width – 68'

Approximate Length – 44'

### Materials

#### Ceiling

- Sloped GWB
- Skylight

#### Walls

- GWB

#### Floor

- Carpet

#### Furniture

- Wood

### Tasks

Reading, Writing, Computing,  
Varying Furniture Layouts

